



Graduation Rate Report 2011

*Providing a Tradition of Quality
for a Changing World,
One Student at a Time*

Summary

Augsburg College
Bethany Lutheran College
Bethel University
Carleton College
College of Saint Benedict
The College of St. Scholastica
Concordia College, Moorhead
Concordia University, St. Paul
Gustavus Adolphus College
Hamline University
Macalester College
Minneapolis College of
Art and Design
Saint John's University
Saint Mary's University
of Minnesota
St. Catherine University
St. Olaf College
University of St. Thomas

Four-Year Graduation Rate (cohort rate for 2004 entrants)

Minnesota Private College Council member institutions have long been leaders in graduating students in four years. Nationally, Minnesota nonprofits rank in the top five of all states.

- Our 17 member institutions have a combined four-year graduation rate of 64%.
- This compares to:
 - 40% at the University of Minnesota (all campuses),
 - 46% at the University of Minnesota – Twin Cities and
 - 21% at the Minnesota State 4-year Universities (MnSCU).
- Member institutions' 4-year graduation rate (64%) is similar to the six-year graduation rate at the University of Minnesota (65%).

National Comparison

- Nationally, Minnesota nonprofit institutions' graduation rate ranks 5th compared to other states and the District of Columbia.
 - Member institutions collectively rank first in the Midwest.

Students of Color

- Member institutions' 4-year graduation rate for students of color is 56% compared to 30% at the University of Minnesota and 11% at MnSCU.

Productivity

	Students Entering in 2004	Students Graduating 4-Years Later
MPCC Member Institutions	8,370	5,380
Public 4-Year Institutions	16,488	5,039

Bremer Tower
445 Minnesota Street, Suite 500
St. Paul, MN 55101

Phone: (651) 228-9061
Fax: (651) 228-0379

colleges@mnprivatecolleges.org
www.mnprivatecolleges.org

Graduation rates are a measure of institution quality. Higher graduation rates indicate appropriately targeted student recruitment, effective campus communication, strong advising and accessible student support services.

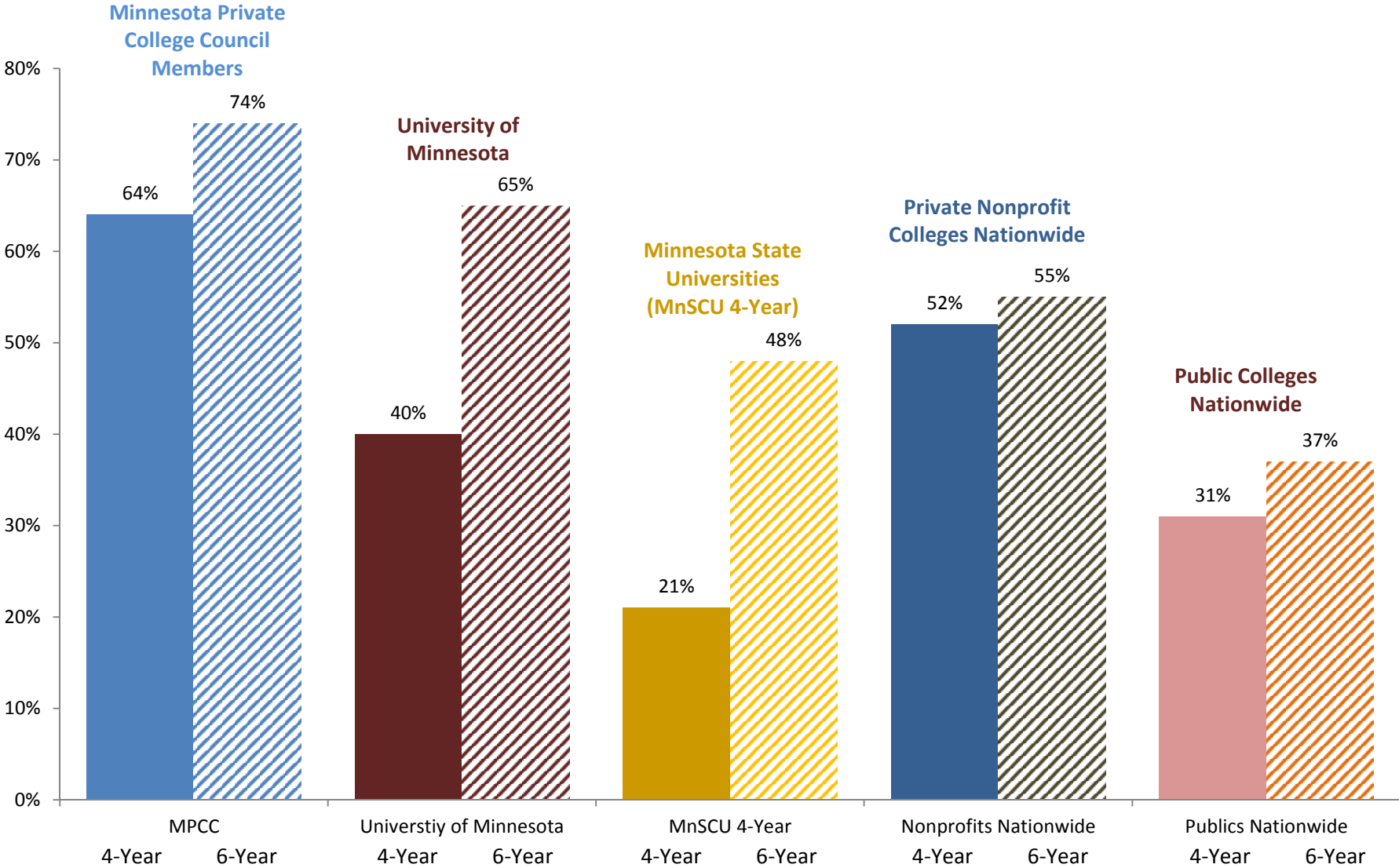
In addition, higher graduation rates may be a positive outcome for institutions that provide high-impact education practices described by the Association of American Colleges and Universities. For instance, students participating in first-year seminars have shown better graduation rates than students who do not. Other high impact practices include writing-intensive courses, undergraduate research and capstone courses and projects.

Graduating from a public institution in 6 years is more costly to a student than attending and graduating from private nonprofit college in 4-years. For students, graduating in four years can minimize costs associated with additional tuition and any borrowing-related expenses. Students who remain in college more than four years also defer post-baccalaureate income earning, which their earlier-graduating peers are able to secure. These deferred earnings are often called opportunity costs.

Additional sources on opportunity costs:

- Sullivan, D., *The Hidden Costs of Low Four-Year Graduation Rates*
http://www.aacu.org/liberaleducation/le-su10/LESU10_DSullivan.cfm
- Minnesota Private College Research Foundation: *How Much Does College Cost?*
<http://www.mnprivatecolleges.org/publications/how-much-does-college-cost>

Graduation Rates by Sector, Minnesota and Nationally



Source: U.S. Department of Education, IPEDS 2004 Cohort.

Percent of Students Completing a Bachelor's Degree
(Full-time, First-time Undergraduates who Began a Program in 2004)

Graduation Rates of Minnesota Institutions

Percent of Students Completing their Bachelor's Degree in 4 Years
Full-time, First-time Undergraduates who Began Program in 2004

**Minnesota's
Private Colleges
(17 MPCC Member
Institutions)**

64% of students
complete their BA in 4
years

**University of
Minnesota
(4 Institutions)**

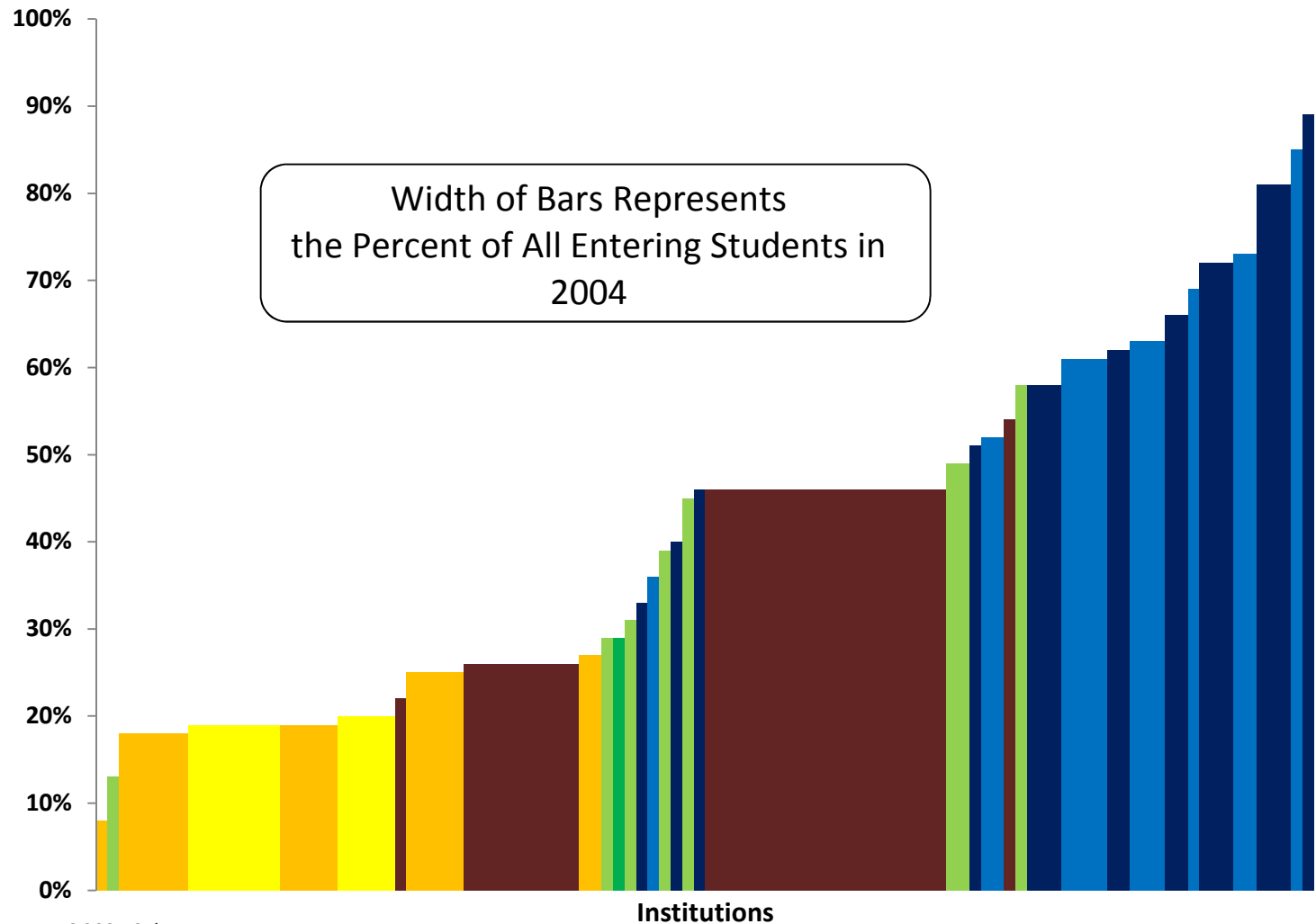
39% of students
complete their BA in 4
years

**Other Private Not-For-
Profit Institutions**

34% of students
complete their BA in 4 years

**State Universities
(7 MnSCU Institutions)**

21% of students
complete their BA in 4 years



Source: U.S. Department of Education, IPEDS 2004 Cohort
Analysis: Minnesota Private College Research Foundation, September 2010

2010-11 Minnesota Postsecondary Graduation Rates by Sector by Race (Class Starting in 2004)

		Grand Total	White, non-Hispanic	All Students of Color	American Indian or Alaskan Native	Asian or Pacific Islander	Black, non-Hispanic	Hispanic
Minnesota's Private Colleges (MPCC)	Bachelor's or equivalent adjusted cohort	8,370	6,904	851	37	403	234	165
	4 year graduation	64%	66%	56%	49%	62%	53%	50%
	5 year graduation	72%	74%	66%	54%	72%	63%	61%
	6 year graduation	74%	75%	68%	57%	73%	65%	63%
Minnesota State Universities	Bachelor's or equivalent adjusted cohort	8,143	7,264	507	59	196	167	85
	4 year graduation	21%	22%	11%	7%	15%	5%	13%
	5 year graduation	42%	43%	30%	22%	36%	25%	29%
	6 year graduation	48%	49%	35%	27%	42%	29%	38%
University of Minnesota	Bachelor's or equivalent adjusted cohort	8,345	6,921	1,234	102	686	310	136
	4 year graduation	40%	42%	30%	24%	35%	18%	34%
	5 year graduation	61%	63%	48%	39%	55%	33%	57%
	6 year graduation	65%	67%	54%	43%	60%	43%	60%
Other Private not-for-profit Colleges (4-Year)	Bachelor's or equivalent adjusted cohort	1,047	953	73	6	33	20	14
	4 year graduation	37%	39%	23%	17%	36%	5%	21%
	5 year graduation	54%	55%	42%	17%	55%	30%	43%
	6 year graduation	58%	59%	51%	17%	64%	40%	50%
Grand Total	Bachelor's or equivalent adjusted cohort	26,237	22,218	2,710	209	1,336	745	408
	4 year graduation	42%	43%	34%	23%	40%	26%	35%
	5 year graduation	58%	59%	50%	36%	57%	40%	51%
	6 year graduation	62%	63%	54%	40%	61%	46%	55%

Source: U.S. Department of Education, IPEDS 2004 Cohort

Analysis: Minnesota Private College Research Foundation, September 2011

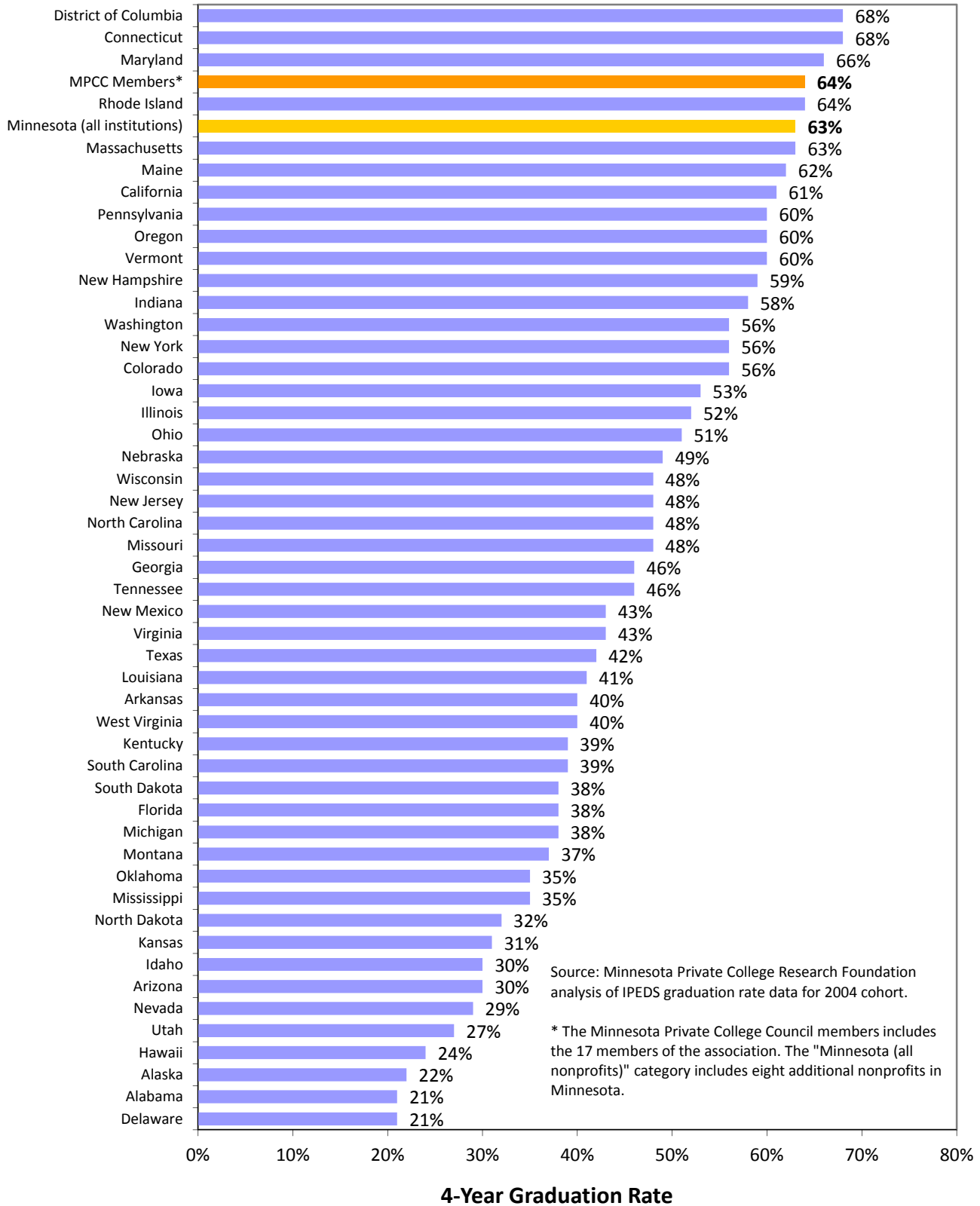
2010-11 Minnesota Postsecondary Graduation Rates by Institution by Sector by Race (Class Starting in 2004)

Institution	Cohort	Grand Total	White, non-Hispanic	All Students of Color	Black, non-Hispanic	Hispanic	Asian or Pacific Islander	American Indian or	
								Alaskan Native	
Augsburg College	Bachelor's or equivalent adjusted cohort	354	304	39	1		16	16	6
	4 year graduation	40%	41%	26%	0%		25%	31%	17%
	5 year graduation	56%	59%	38%	0%		44%	38%	33%
	6 year graduation	60%	63%	38%	0%		44%	38%	33%
Bethany Lutheran College	Bachelor's or equivalent adjusted cohort	153	0	0	0		0	0	0
	4 year graduation	33%	na	na	na		na	na	na
	5 year graduation	39%	na	na	na		na	na	na
	6 year graduation	42%	na	na	na		na	na	na
Bethel University	Bachelor's or equivalent adjusted cohort	668	614	52	4		20	14	14
	4 year graduation	58%	60%	31%	50%		30%	21%	36%
	5 year graduation	67%	69%	46%	50%		55%	36%	43%
	6 year graduation	69%	70%	50%	50%		60%	36%	50%
Carleton College	Bachelor's or equivalent adjusted cohort	487	355	107	3		49	27	28
	4 year graduation	89%	91%	83%	100%		94%	70%	75%
	5 year graduation	93%	93%	92%	100%		98%	89%	82%
	6 year graduation	93%	94%	92%	100%		98%	89%	82%
College of Saint Benedict	Bachelor's or equivalent adjusted cohort	483	453	22	0		13	3	6
	4 year graduation	73%	73%	91%	na		100%	100%	67%
	5 year graduation	79%	78%	95%	na		100%	100%	83%
	6 year graduation	79%	79%	95%	na		100%	100%	83%
Concordia College at Moorhead	Bachelor's or equivalent adjusted cohort	768	679	35	6		14	6	9
	4 year graduation	63%	66%	51%	17%		79%	0%	67%
	5 year graduation	67%	68%	51%	17%		79%	0%	67%
	6 year graduation	67%	69%	51%	17%		79%	0%	67%
Concordia University-Saint Paul	Bachelor's or equivalent adjusted cohort	176	127	36	2		16	16	2
	4 year graduation	36%	43%	22%	50%		25%	19%	0%
	5 year graduation	48%	57%	28%	50%		38%	19%	0%
	6 year graduation	53%	63%	31%	50%		38%	25%	0%
Gustavus Adolphus College	Bachelor's or equivalent adjusted cohort	651	584	54	1		29	11	13
	4 year graduation	72%	72%	67%	100%		66%	82%	54%
	5 year graduation	77%	77%	78%	100%		76%	91%	69%
	6 year graduation	77%	77%	78%	100%		76%	91%	69%
Hamline University	Bachelor's or equivalent adjusted cohort	442	357	67	3		34	23	7
	4 year graduation	62%	64%	51%	33%		50%	57%	43%
	5 year graduation	69%	71%	63%	67%		59%	70%	57%
	6 year graduation	72%	73%	67%	67%		65%	74%	57%
Macalester College	Bachelor's or equivalent adjusted cohort	485	321	94	3		47	31	13
	4 year graduation	85%	85%	81%	100%		77%	84%	85%
	5 year graduation	87%	87%	84%	100%		83%	84%	85%
	6 year graduation	88%	87%	85%	100%		83%	87%	85%
Minneapolis College of Art and Design	Bachelor's or equivalent adjusted cohort	108	77	6	1		3	1	1
	4 year graduation	69%	73%	33%	0%		67%	0%	0%
	5 year graduation	72%	75%	33%	0%		67%	0%	0%
	6 year graduation	72%	75%	33%	0%		67%	0%	0%
Saint Johns University	Bachelor's or equivalent adjusted cohort	512	480	21	1		11	3	6
	4 year graduation	66%	67%	57%	0%		82%	33%	33%
	5 year graduation	73%	74%	62%	0%		91%	33%	33%
	6 year graduation	74%	76%	62%	0%		91%	33%	33%
Saint Mary's University of Minnesota	Bachelor's or equivalent adjusted cohort	362	306	36	2		8	12	14
	4 year graduation	51%	54%	28%	100%		38%	17%	21%
	5 year graduation	59%	61%	44%	100%		50%	25%	50%
	6 year graduation	59%	62%	44%	100%		50%	25%	50%
St Catherine University	Bachelor's or equivalent adjusted cohort	346	263	56	1		38	9	8
	4 year graduation	46%	48%	34%	0%		32%	44%	38%
	5 year graduation	63%	65%	54%	0%		55%	67%	38%
	6 year graduation	67%	68%	63%	0%		58%	78%	75%
St. Olaf College	Bachelor's or equivalent adjusted cohort	777	632	60	2		38	6	14
	4 year graduation	81%	83%	70%	50%		79%	83%	43%
	5 year graduation	85%	87%	78%	50%		87%	83%	57%
	6 year graduation	85%	87%	78%	50%		87%	83%	57%
The College of Saint Scholastica	Bachelor's or equivalent adjusted cohort	437	382	16	3		9	3	1
	4 year graduation	52%	52%	25%	0%		33%	33%	0%
	5 year graduation	61%	60%	50%	33%		44%	100%	0%
	6 year graduation	62%	60%	50%	33%		44%	100%	0%
University of St Thomas	Bachelor's or equivalent adjusted cohort	1,161	970	138	4		58	53	23
	4 year graduation	61%	62%	55%	75%		57%	57%	43%
	5 year graduation	75%	76%	67%	75%		66%	70%	61%
	6 year graduation	77%	78%	70%	100%		69%	72%	61%

Minnesota's Private Colleges (MPCC)

	Institution	Cohort	Grand Total	White, non-Hispanic	All Students of Color	American Indian or Alaskan Native			
						Black, non-Hispanic	Hispanic	Asian or Pacific Islander	American Indian or Alaskan Native
Minnesota State Universities	Bemidji State University	Bachelor's or equivalent adjusted cohort	592	525	39	20	9	7	3
		4 year graduation	27%	28%	8%	5%	22%	0%	0%
		5 year graduation	45%	47%	26%	10%	56%	29%	33%
		6 year graduation	50%	53%	31%	20%	56%	29%	33%
	Minnesota State University-Mankato	Bachelor's or equivalent adjusted cohort	2,136	1,900	138	11	51	58	18
		4 year graduation	20%	20%	13%	18%	20%	9%	6%
		5 year graduation	43%	44%	36%	55%	39%	33%	28%
		6 year graduation	49%	50%	43%	55%	51%	34%	44%
	Metropolitan State University	Bachelor's or equivalent adjusted cohort	50	23	26	1	17	7	1
		4 year graduation	4%	4%	4%	0%	6%	0%	0%
		5 year graduation	22%	17%	27%	100%	24%	14%	100%
		6 year graduation	26%	22%	31%	100%	29%	14%	100%
	Minnesota State University-Moorhead	Bachelor's or equivalent adjusted cohort	1,230	1,053	64	10	17	23	14
		4 year graduation	18%	19%	8%	0%	12%	0%	21%
		5 year graduation	37%	38%	27%	10%	35%	17%	43%
		6 year graduation	42%	43%	33%	20%	41%	26%	43%
	Saint Cloud State University	Bachelor's or equivalent adjusted cohort	2,034	1,819	135	13	61	44	17
		4 year graduation	19%	20%	11%	8%	18%	5%	6%
		5 year graduation	40%	40%	31%	15%	39%	27%	24%
		6 year graduation	47%	47%	38%	15%	44%	34%	41%
	Southwest Minnesota State University	Bachelor's or equivalent adjusted cohort	537	463	49	2	16	19	12
		4 year graduation	19%	20%	16%	0%	19%	11%	25%
		5 year graduation	36%	38%	22%	0%	31%	16%	25%
		6 year graduation	39%	42%	22%	0%	31%	16%	25%
Winona State University	Bachelor's or equivalent adjusted cohort	1,564	1,481	56	2	25	9	20	
	4 year graduation	25%	26%	7%	0%	4%	0%	15%	
	5 year graduation	49%	49%	23%	50%	24%	11%	25%	
	6 year graduation	54%	55%	29%	50%	32%	11%	30%	
University of Minnesota	University of Minnesota-Twin Cities	Bachelor's or equivalent adjusted cohort	5,562	4,434	1,019	51	596	266	106
		4 year graduation	46%	49%	31%	18%	37%	18%	35%
		5 year graduation	66%	70%	49%	29%	57%	35%	55%
		6 year graduation	70%	74%	55%	35%	62%	45%	57%
	University of Minnesota-Crookston	Bachelor's or equivalent adjusted cohort	195	163	15	1	2	9	3
		4 year graduation	22%	24%	20%	100%	50%	11%	0%
		5 year graduation	34%	36%	40%	100%	50%	11%	100%
		6 year graduation	37%	39%	47%	100%	50%	22%	100%
	University of Minnesota-Duluth	Bachelor's or equivalent adjusted cohort	2,205	2,021	134	14	71	29	20
		4 year graduation	26%	26%	16%	14%	18%	7%	20%
		5 year graduation	50%	50%	39%	36%	41%	24%	55%
		6 year graduation	54%	54%	46%	36%	49%	28%	65%
	University of Minnesota-Morris	Bachelor's or equivalent adjusted cohort	383	303	66	36	17	6	7
		4 year graduation	54%	57%	38%	33%	29%	50%	71%
		5 year graduation	64%	66%	53%	53%	47%	50%	71%
		6 year graduation	66%	67%	56%	56%	47%	50%	86%
Other Private Not-For-Profit Colleges	Apostolic Bible Institute Inc	Bachelor's or equivalent adjusted cohort	12	6	1	0	0	1	0
		4 year graduation	58%	67%	100%	na	na	100%	na
		5 year graduation	58%	67%	100%	na	na	100%	na
		6 year graduation	58%	67%	100%	na	na	100%	na
	Martin Luther College	Bachelor's or equivalent adjusted cohort	184	181	3	0	1	1	1
		4 year graduation	45%	46%	0%	na	0%	0%	0%
		5 year graduation	68%	70%	0%	na	0%	0%	0%
		6 year graduation	71%	72%	0%	na	0%	0%	0%
	Crossroads College	Bachelor's or equivalent adjusted cohort	24	21	2	0	0	2	0
		4 year graduation	29%	33%	0%	na	na	0%	na
		5 year graduation	50%	52%	50%	na	na	50%	na
		6 year graduation	50%	52%	50%	na	na	50%	na
	North Central University	Bachelor's or equivalent adjusted cohort	237	209	17	0	5	8	4
		4 year graduation	13%	13%	18%	na	60%	0%	0%
		5 year graduation	30%	31%	29%	na	60%	13%	25%
		6 year graduation	40%	41%	35%	na	60%	25%	25%
	Northwestern College	Bachelor's or equivalent adjusted cohort	398	368	27	2	15	4	6
		4 year graduation	49%	49%	41%	50%	53%	0%	33%
		5 year graduation	65%	65%	63%	50%	67%	50%	67%
		6 year graduation	68%	68%	74%	50%	73%	75%	83%
Oak Hills Christian College	Bachelor's or equivalent adjusted cohort	16	14	2	1	0	1	0	
	4 year graduation	31%	36%	0%	0%	na	0%	na	
	5 year graduation	50%	57%	0%	0%	na	0%	na	
	6 year graduation	50%	57%	0%	0%	na	0%	na	
Crown College	Bachelor's or equivalent adjusted cohort	135	116	19	1	12	3	3	
	4 year graduation	39%	43%	11%	0%	8%	0%	33%	
	5 year graduation	50%	52%	37%	0%	42%	33%	33%	
	6 year graduation	53%	54%	47%	0%	58%	33%	33%	
College of Visual Arts	Bachelor's or equivalent adjusted cohort	41	38	2	2	0	0	0	
	4 year graduation	29%	29%	0%	0%	na	na	na	
	5 year graduation	34%	34%	0%	0%	na	na	na	
	6 year graduation	34%	34%	0%	0%	na	na	na	

Private Nonprofit 4-Year Graduation Rate By State



Minnesota Higher Education Pipeline: 4-Year Graduation Productivity - MPCC and Publics

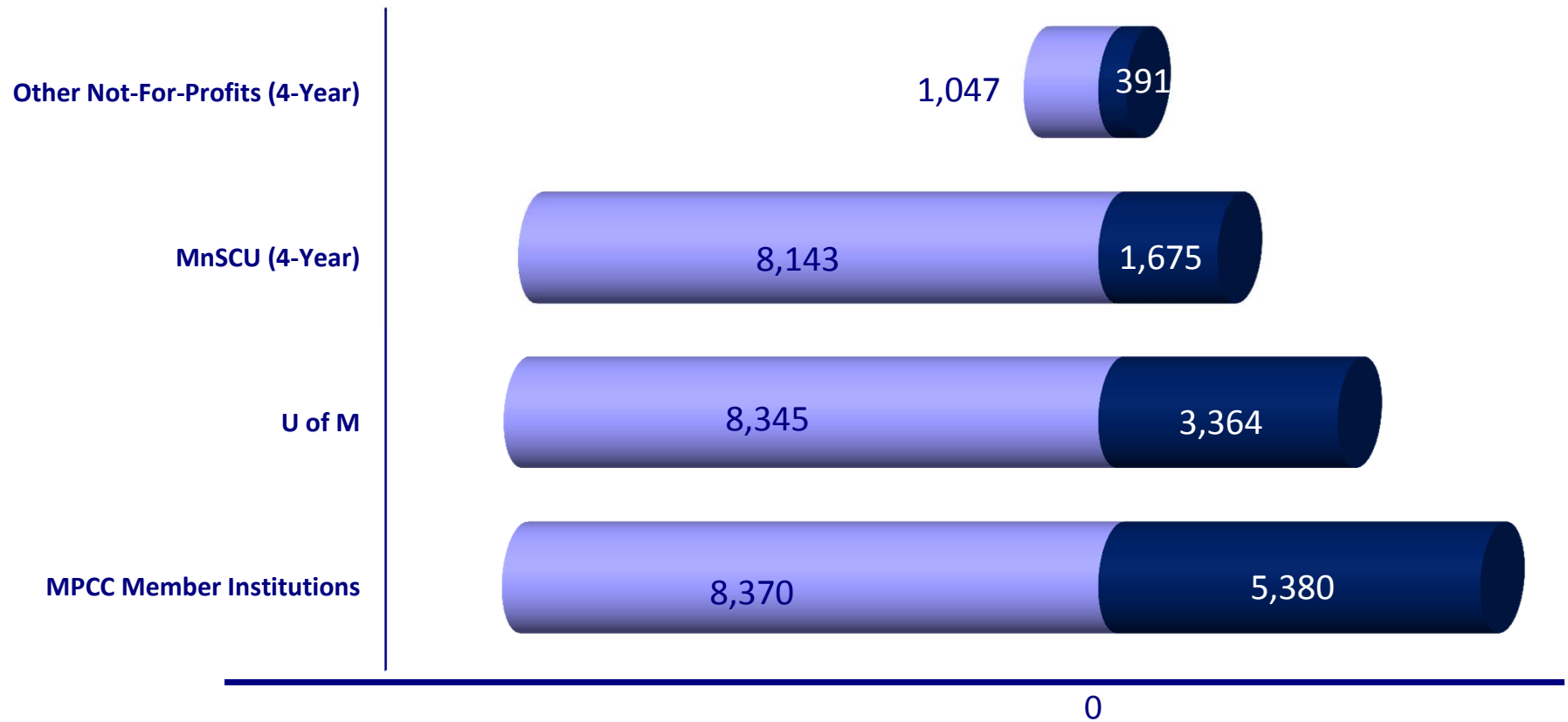
■ Entering Full-Time Freshmen in 2004

■ Number Graduating After 4 Years



0

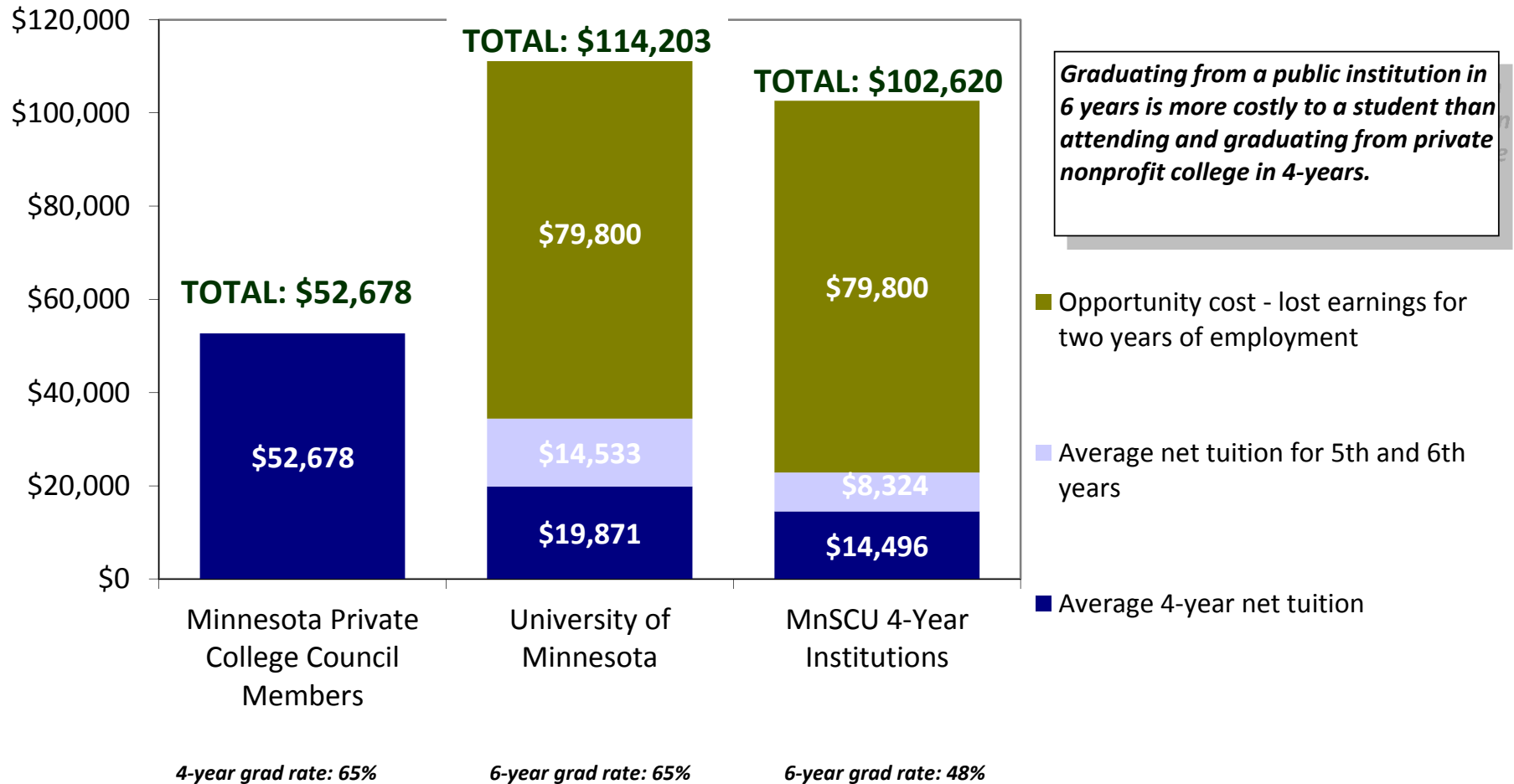
Minnesota Higher Education Pipeline: 4-Year Graduation Productivity by Sector



Source: U.S. Department of Education, IPEDS 2004 Cohort
Analysis: Minnesota Private College Research Foundation, September 2011

COMPARING COLLEGE COSTS

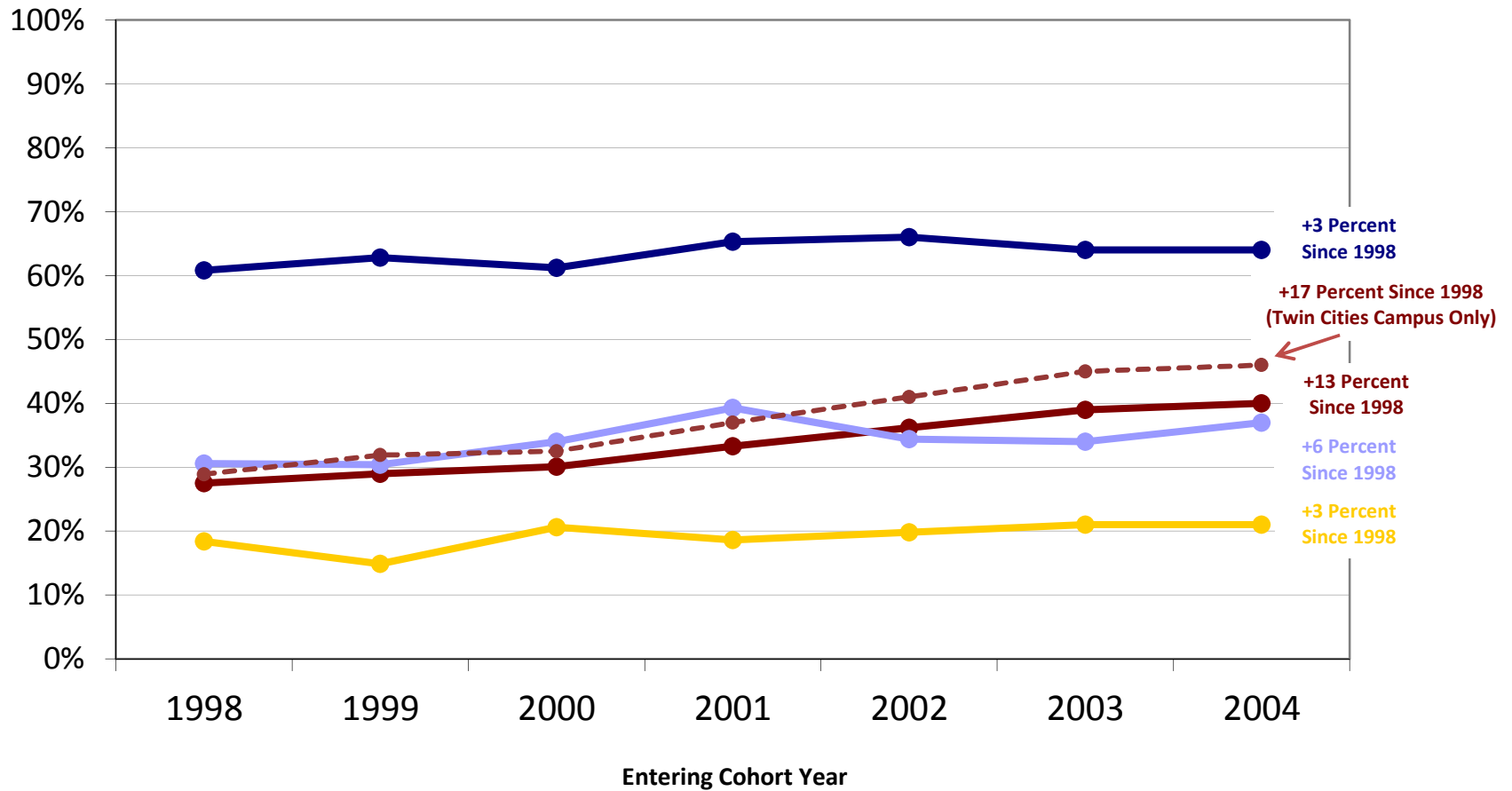
considering graduation rates and lost earnings



Analysis: Minnesota Private College Research Foundation, July 2011.

Note: Estimated annual lost earnings of \$39,900 is from Michigan State University's Collegiate Employment Research Institute report "Recruiting Trends 2009-2010."

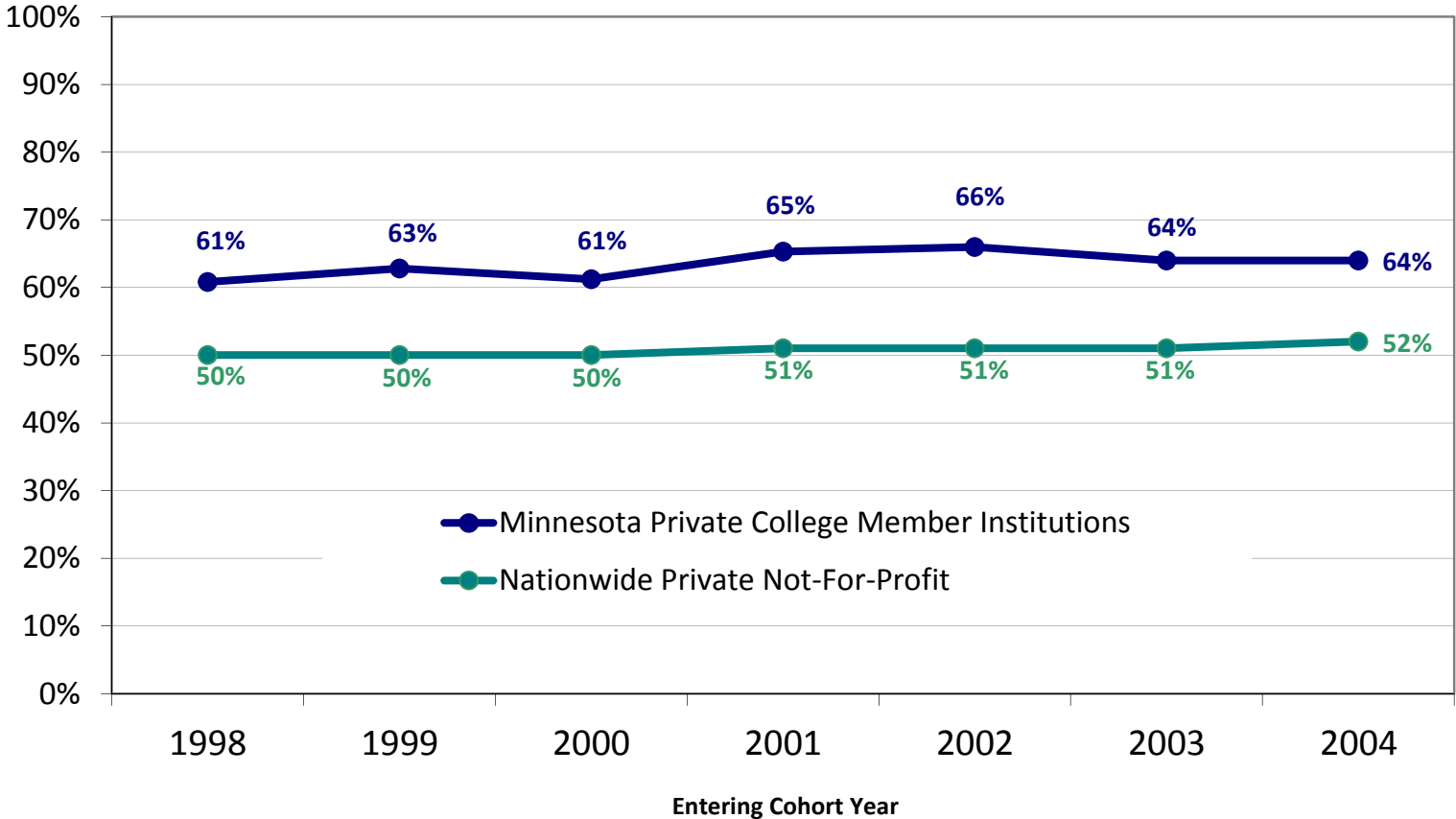
Graduation Rate Trends: Percent of Cohort Graduating in Four Years by Sector



Source: U.S. Department of Education, IPEDS 1998 through 2004 Cohort.
 Analysis: Minnesota Private College Research Foundation, September 2011.

- Minnesota Private College Member Institutions
- University of Minnesota
- State Colleges and Universities
- Other Private Not-For-Profits

Graduation Rate Trends - Percent Graduating in Four Years: Minnesota's Private Colleges Compared to All Other Not-For- Profit Colleges in U.S.



Source: U.S. Department of Education, IPEDS 1998 through 2004 Cohort.
Analysis: Minnesota Private College Research Foundation, September 2011.