

Graduation Rate Report

November 2017

The 17 members of the Minnesota Private College Council (MPCC) have long been leaders in graduating students on time. This report examines graduation rates for the fall 2010 first-time, full-time cohort, and includes statewide and national comparisons and trends over time. Please note that fall 2010 cohort four- and five-year graduation rates data were not available for Minnesota State universities and thus fall 2009 cohort data were used instead

Highlights

- Our 17 member institutions have a combined four-year graduation rate of 66%.
 - This compares to 53% at the University of Minnesota (all campuses), 61% at the University of Minnesota-Twin Cities and 23% at the Minnesota State universities (see pages 3 and 5).
 - Our four-year graduation rate is the third highest in the nation, coming in just behind the graduation rate for nonprofit colleges and universities in D.C. and Rhode Island. And our four-year graduation rate is higher than the public four-year institutions in every state (see pages 6 and 7).
- Our student of color four-year graduation rate of 54% is the highest in the state and higher than the national average of 45% for nonprofits nationwide (see page 4).

Our students graduate sooner, saving them time and money

With the highest four-year graduation rate in the state, most of our students graduate on time, which means they can stop paying tuition and start working or attend graduate school. When a student takes longer to graduate, there are additional costs to factor in. Looking across sectors, the combined five-year graduation rate at the University of Minnesota is 69%, about the same as the MPCC member institution four-year graduation rate. And the six-year graduation rate for Minnesota State universities is 47%.

When calculating the true cost of earning a bachelor's degree for most graduates at the University of Minnesota or Minnesota State, you need to account for the one or two additional years of tuition, the loss of a State Grant for those years and the opportunity cost of forgone earnings, which averaged \$35,529 for students who graduated with a bachelor's degree in Minnesota in 2013-14. Using the average net tuition for first-time, full-time students for each sector, the real cost of obtaining a bachelor's degree from an MPCC member institution can be estimated at \$57,808 for the fall 2010 cohort, compared to \$66,141 at the University of Minnesota and \$95,063 at Minnesota State universities (see page 8).

Minnesota Private Colleges | Excellence within reach

Augsburg University
Bethany Lutheran College
Bethel University
Carleton College
College of Saint Benedict
The College of St. Scholastica

Concordia College, Moorhead
Concordia University, St. Paul
Gustavus Adolphus College
Hamline University
Macalester College
Minneapolis College of Art and Design

Saint John's University
Saint Mary's University of Minnesota
St. Catherine University
St. Olaf College
University of St. Thomas

Productivity at Minnesota Private Colleges

With the highest graduation rate in the state, MPCC member institutions are more efficient in producing college graduates, which means our students are able to enter the workforce sooner. This productivity is illustrated by the fact that over 8,000 more first-time students started at public four-year institutions than at MPCC member institutions in fall 2010, but those institutions only produced 500 more graduates four years later (see page 9).

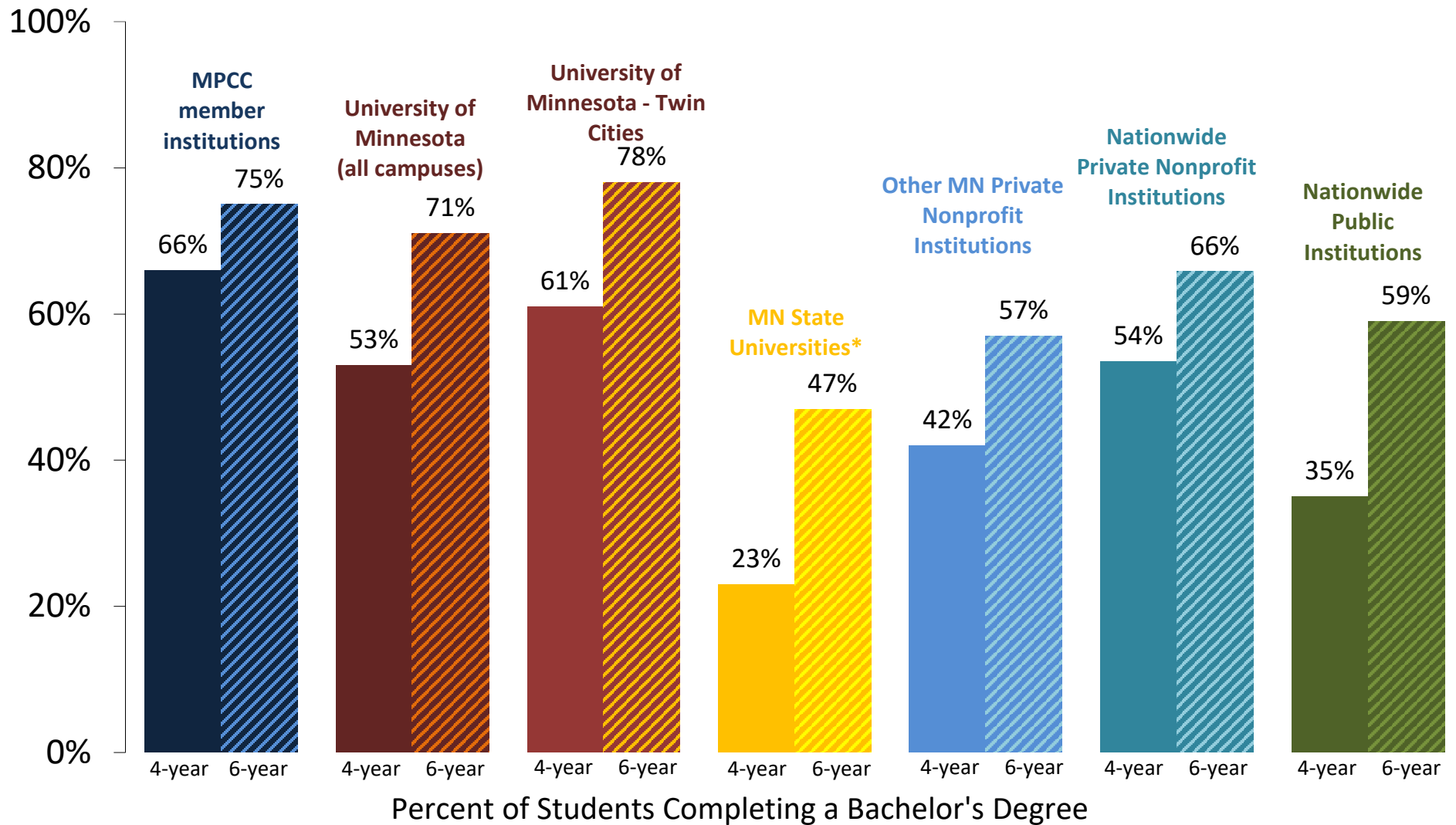
Four-year Completion Rates

The four-year completion rate is another measure that demonstrates the high on-time graduation rates at the MPCC member institutions. Starting with the fall 2010 first-time, full-time cohort and looking at all those who graduated within six years from the institution they started at, 89% of MPCC member institutions' graduates finished in four years, compared to 74% at the University of Minnesota and 50% at Minnesota State universities (see page 10). Put another way, only 11% of the MPCC graduates from the fall 2010 cohort took more than four years to graduate, compared to 26% at the University of Minnesota and 50% at Minnesota State universities.

Graduation and Retention Rates, a statewide and national perspective over time

MPCC member institutions' combined graduation rate of 66% has held steady over the past decade, and has long been the highest graduation rate in the state of Minnesota (see page 11). The four-year graduation rate for the University of Minnesota increased by 23 percentage points compared to the fall 2000 cohort, from 30% to 53%. This increase has been driven by the rising four-year graduation rate at the University of Minnesota-Twin Cities, which rose to 61% for the fall 2010 cohort, up from 37% for the fall 2000 cohort. The four-year graduation rate for Minnesota State universities has held steady over the past decade, at 23% for the fall 2010 cohort, up from 21% for the fall 2000 cohort. MPCC member institutions' combined graduation rate has consistently been higher than the national average, which was 54% for the fall 2010 cohort (see page 12).

Graduation Rates at Minnesota and US Institutions by Sector

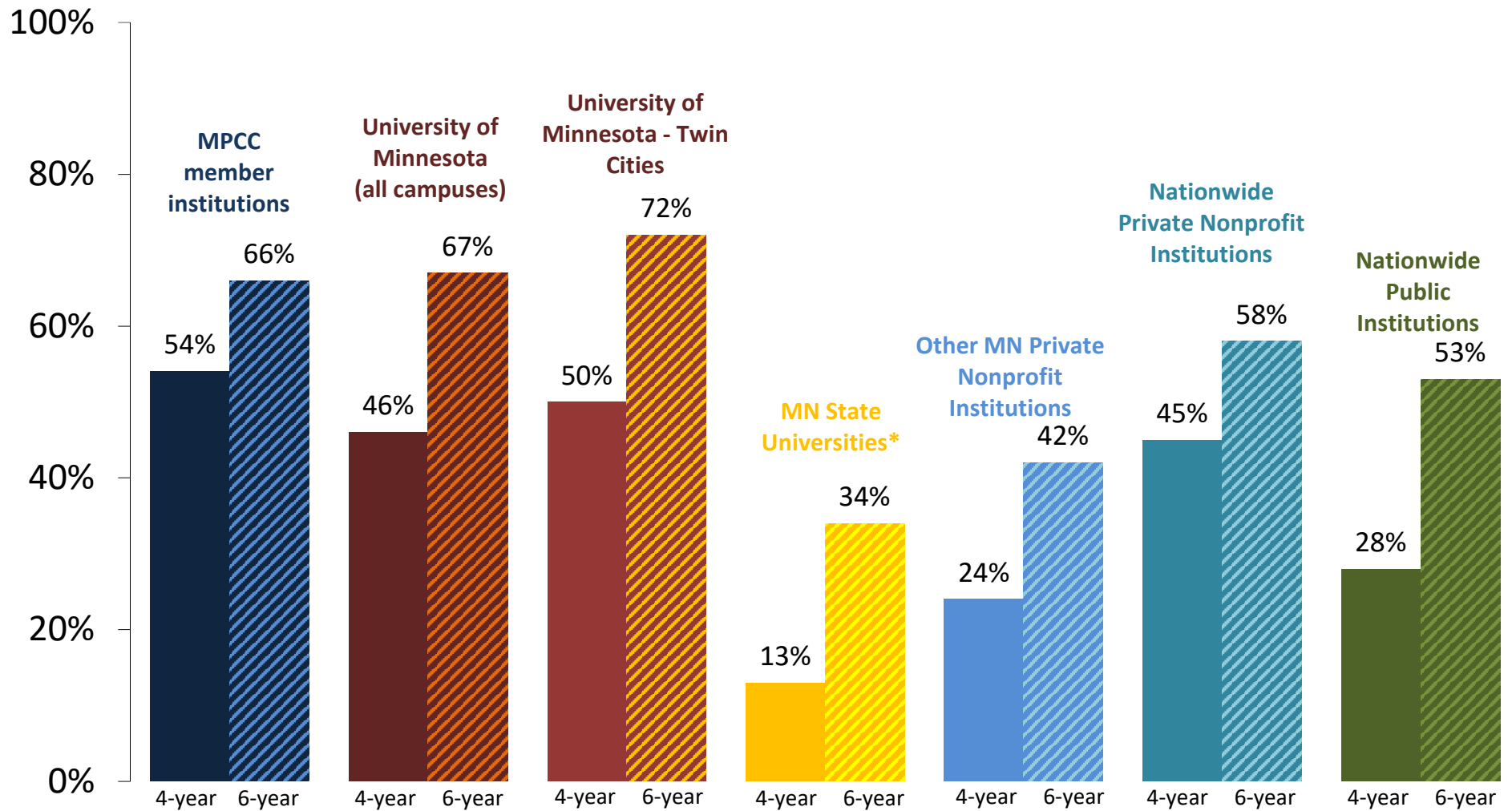


Percent of Students Completing a Bachelor's Degree
(First-time, full-time undergraduates who started a 4-year program in 2010)

*Fall 2009 cohort data was used for Minnesota State Universities because fall 2010 cohort data was not available.

Source: U.S. Department of Education, IPEDS 2010 Cohort

Student of Color Graduation Rates at Minnesota and US Institutions by Sector



Percent of Students Completing a Bachelor's Degree
(First-time, full-time undergraduates who started a 4-year program in 2010)

*Fall 2009 cohort data was used for Minnesota State Universities because fall 2010 cohort data was not available.
 Source: U.S. Department of Education, IPEDS 2010 Cohort

2015-16 Minnesota Postsecondary Graduation Rates by Sector by Race (Class Starting in 2010)*

		Grand Total	White	All Students of Color	American	Asian	Black or African American	Hispanic	Native	Two or More Races	Unknown Race/ Ethnicity	Non-resident
					Indian/ Alaskan Native				Hawaiian/ Pacific Islander			
Minnesota Private Colleges (MPCC)	Bachelor's or equivalent adjusted cohort	8,973	7,053	1,403	33	454	369	340	5	202	224	293
	4-year graduation rate	66%	69%	54%	33%	58%	40%	62%	80%	57%	57%	71%
	5-year graduation rate	74%	76%	63%	42%	68%	49%	72%	80%	66%	63%	76%
	6-year graduation rate	75%	77%	66%	45%	71%	53%	73%	80%	69%	67%	78%
University of Minnesota	Bachelor's or equivalent adjusted cohort	8,386	6,741	1,326	60	544	260	198	10	254	40	279
	4-year graduation rate	53%	54%	46%	37%	50%	36%	48%	10%	49%	45%	56%
	5-year graduation rate	69%	70%	62%	48%	68%	55%	59%	50%	63%	60%	73%
	6-year graduation rate	71%	72%	67%	53%	76%	60%	61%	50%	67%	65%	78%
Minnesota State Universities (fall 2009 cohort data)	Bachelor's or equivalent adjusted cohort	8,717	7,442	1,017	36	220	324	219	4	214	108	150
	4-year graduation rate	23%	25%	13%	11%	13%	10%	14%	0%	19%	27%	25%
	5-year graduation rate	41%	43%	27%	19%	30%	21%	32%	25%	29%	48%	47%
	6-year graduation rate	47%	48%	34%	25%	39%	29%	35%	50%	35%	55%	51%
Other MN Private Nonprofit Colleges (4-Year)	Bachelor's or equivalent adjusted cohort	1,101	917	132	8	44	27	36	0	17	41	11
	4-year graduation rate	42%	45%	24%	13%	32%	15%	22%	na	29%	34%	18%
	5-year graduation rate	55%	58%	40%	13%	52%	33%	33%	na	47%	44%	36%
	6-year graduation rate	57%	59%	42%	13%	52%	37%	36%	na	53%	44%	36%
Private For-profit Colleges (4-Year)	Bachelor's or equivalent adjusted cohort	530	304	100	6	25	36	26	0	7	124	2
	4-year graduation rate	20%	26%	15%	0%	32%	6%	12%	na	29%	7%	50%
	5-year graduation rate	25%	31%	20%	17%	32%	17%	12%	na	29%	15%	50%
	6-year graduation rate	26%	32%	22%	17%	36%	19%	12%	na	29%	15%	50%
Grand Total*	Bachelor's or equivalent adjusted cohort	27,707	22,457	3,978	143	1,287	1,016	819	19	694	537	735
	4-year graduation rate	47%	48%	39%	27%	45%	28%	42%	26%	41%	37%	55%
	5-year graduation rate	60%	62%	52%	36%	60%	40%	54%	53%	53%	47%	68%
	6-year graduation rate	63%	65%	56%	41%	66%	46%	57%	58%	57%	51%	72%

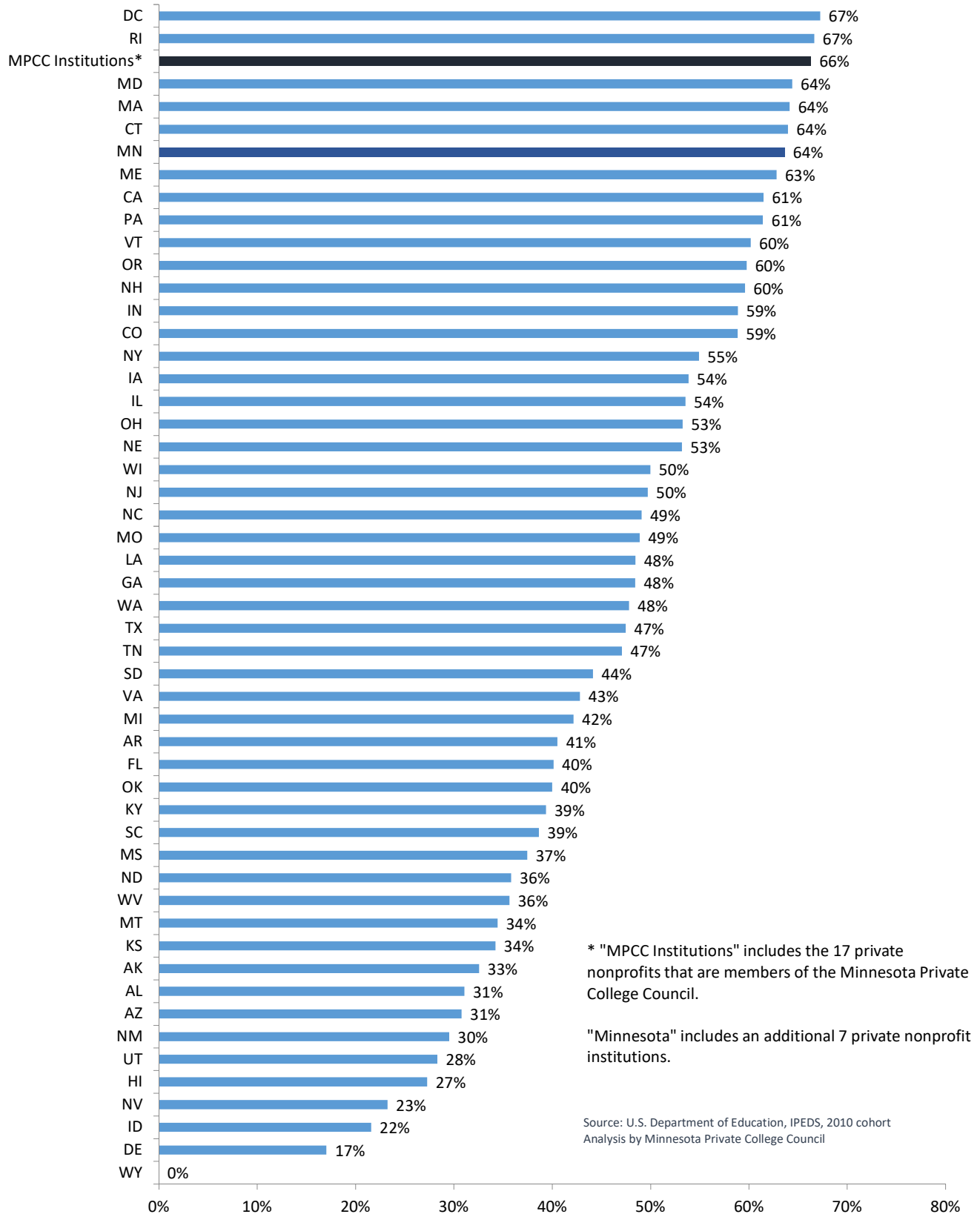
*Fall 2009 cohort data was used for Minnesota State Universities because fall 2010 cohort data was not available. This also affects the total.

Source: U.S. Department of Education, IPEDS 2010 Cohort, 2009 Cohort for Minnesota State universities

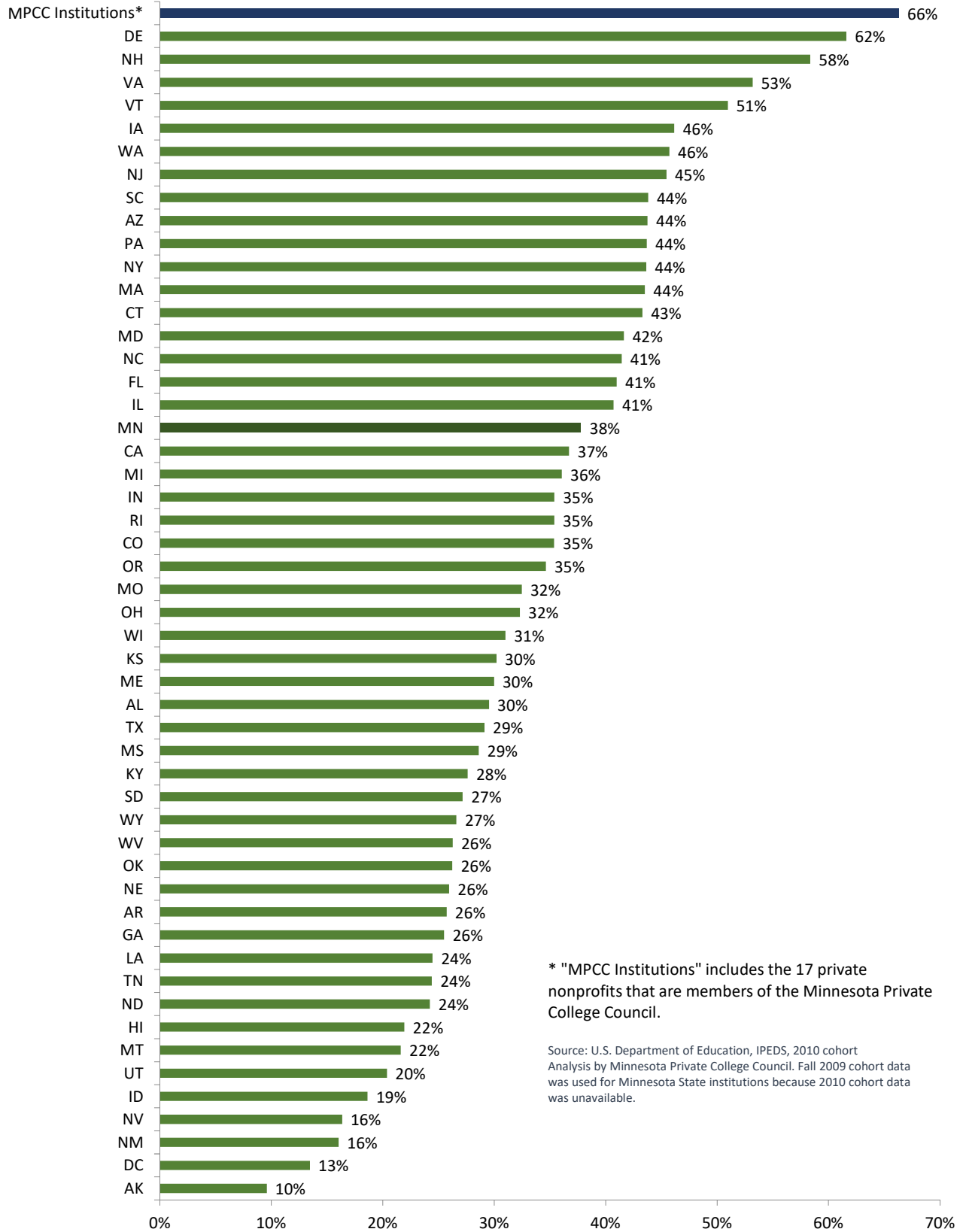
Analysis: Minnesota Private College Council, August 017

Note: Calculation for Students of Color does not include unknown race/ethnicity or nonresidents

Private Nonprofit Four-year Graduation Rates by State



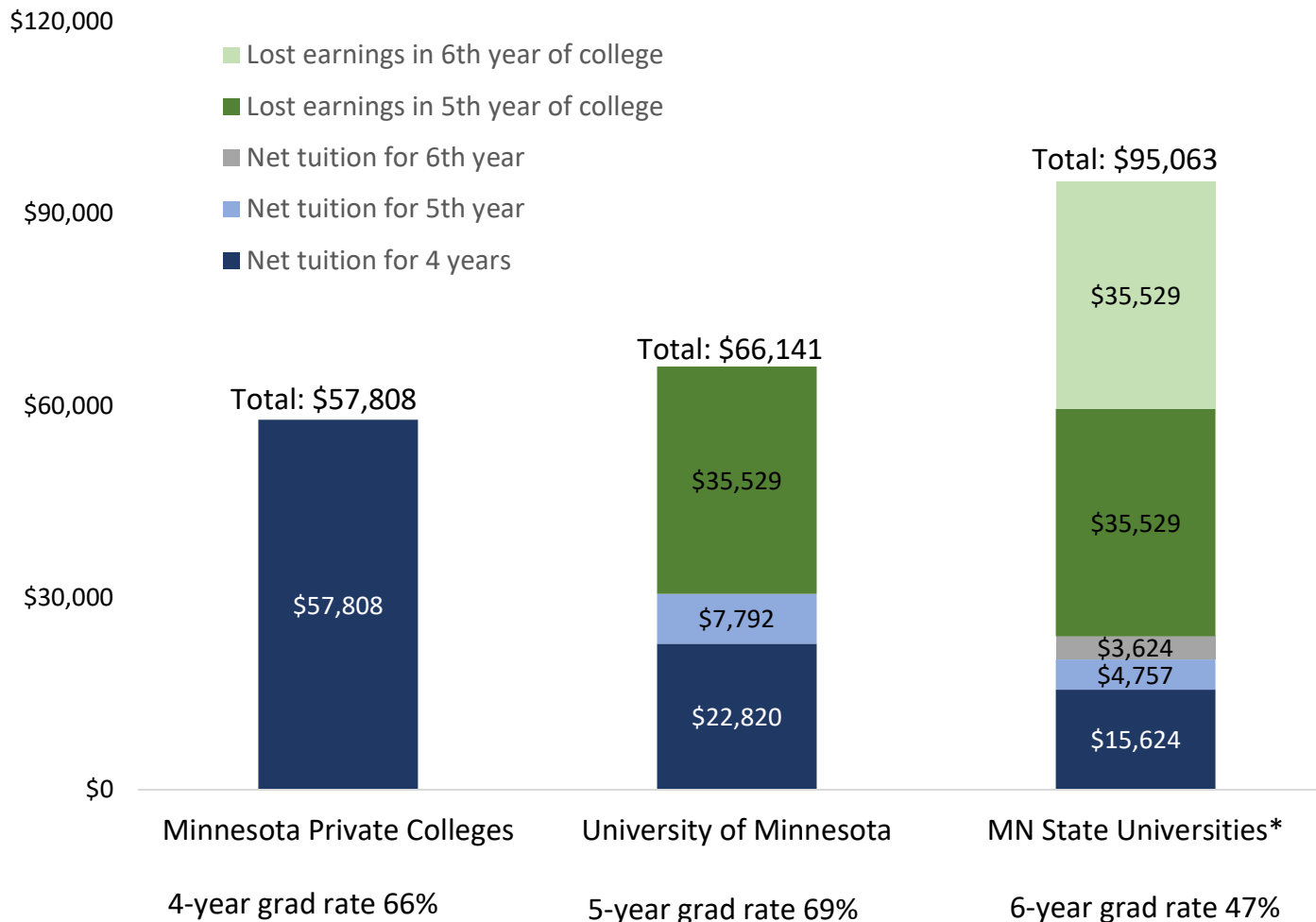
Public Four-year Graduation Rates by State



* "MPCC Institutions" includes the 17 private nonprofits that are members of the Minnesota Private College Council.

Source: U.S. Department of Education, IPEDS, 2010 cohort
 Analysis by Minnesota Private College Council. Fall 2009 cohort data was used for Minnesota State institutions because 2010 cohort data was unavailable.

Comparing College Costs in Minnesota: Length of Time to Graduation and the Opportunity Cost of Lost Earnings



When comparing college costs one needs to weigh how long it will likely take to earn a degree.

For the 17 institutions in the Minnesota Private College Council, the 4-year grad rate for first-time full-time students is 66%; this compares to 52% at the U of M system and 23% at Minnesota State universities. This means that our students are more likely to graduate on time, stop paying tuition and start working.

Looking across sectors, our 4-year grad rate is about the same as the 5-year grad rate at the U of M. And for Minnesota State the 6-year grad rate is still below our 4-year grad rate but is the best point of comparison. So in taking longer to graduate, there are additional costs to factor in. These include the one or two additional years of tuition, the loss of State Grant for those years and the opportunity cost of forgone earnings — averaging \$35,529 for students who graduated in 2013-14.

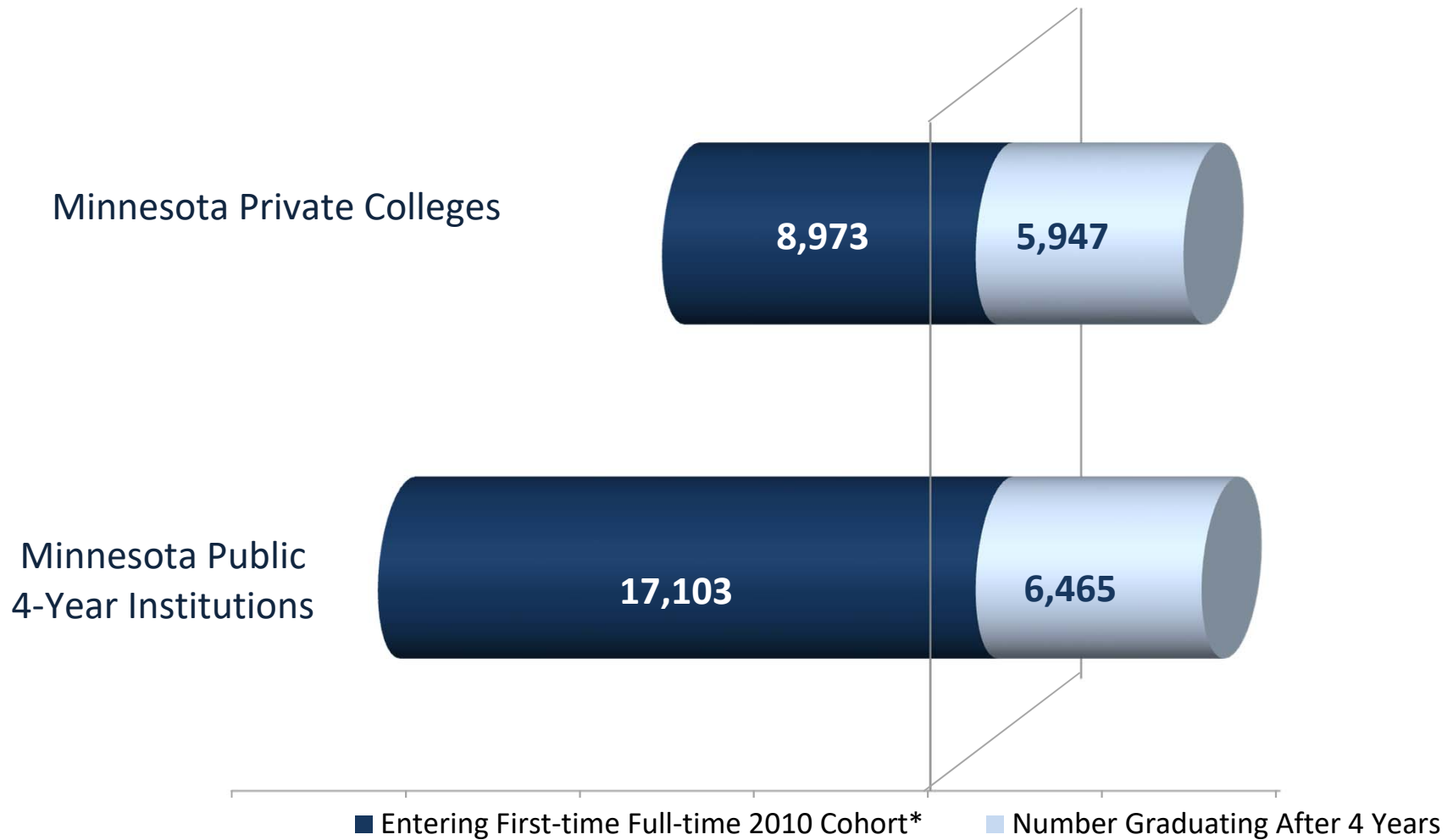
In the end the real cost of earning a bachelor's degree at a an MPCC member institution is estimated to be less than at the Minnesota public systems.

Sources : IPEDS graduation rate and financial aid data for 2010 first-time full-time cohort, lost earnings of \$35,529 based on data from Graduate Employment Outcomes Data from MN DEED for 2013-14 Graduates Second Year After Graduation.

*Fall 2009 cohort data was used for Minnesota State Universities because fall 2010 cohort data was not available.

Notes: Assumes same net tuition for first four years. Net tuition for fifth and six years based on same data but excludes State Grant due to four year eligibility cap.

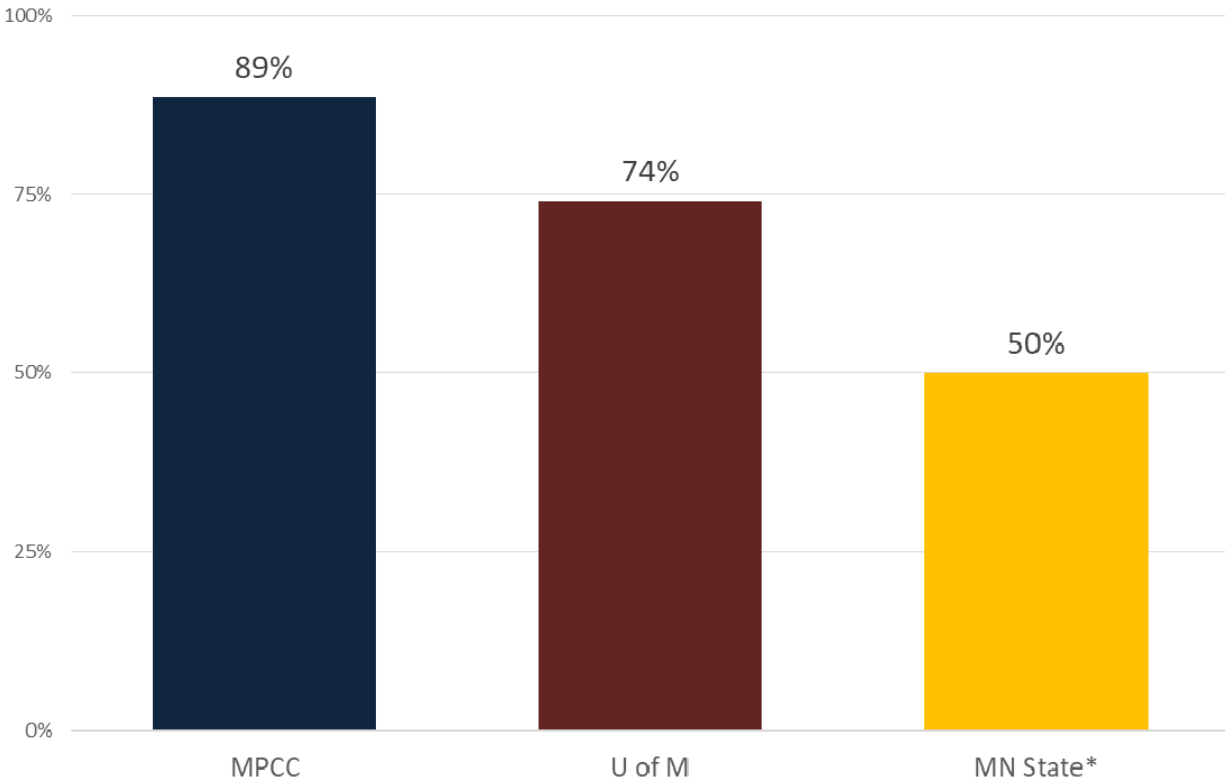
Minnesota Higher Education Pipeline: Number of Students Graduating in Four Years by Sector



Source: U.S. Department of Education, IPEDS fall 2010 Cohort

*Note: Fall 2009 cohort data used for Minnesota State because fall 2010 cohort data was unavailable.

Four-year Completion Rate by Sector (percent of graduates who finish in four years)



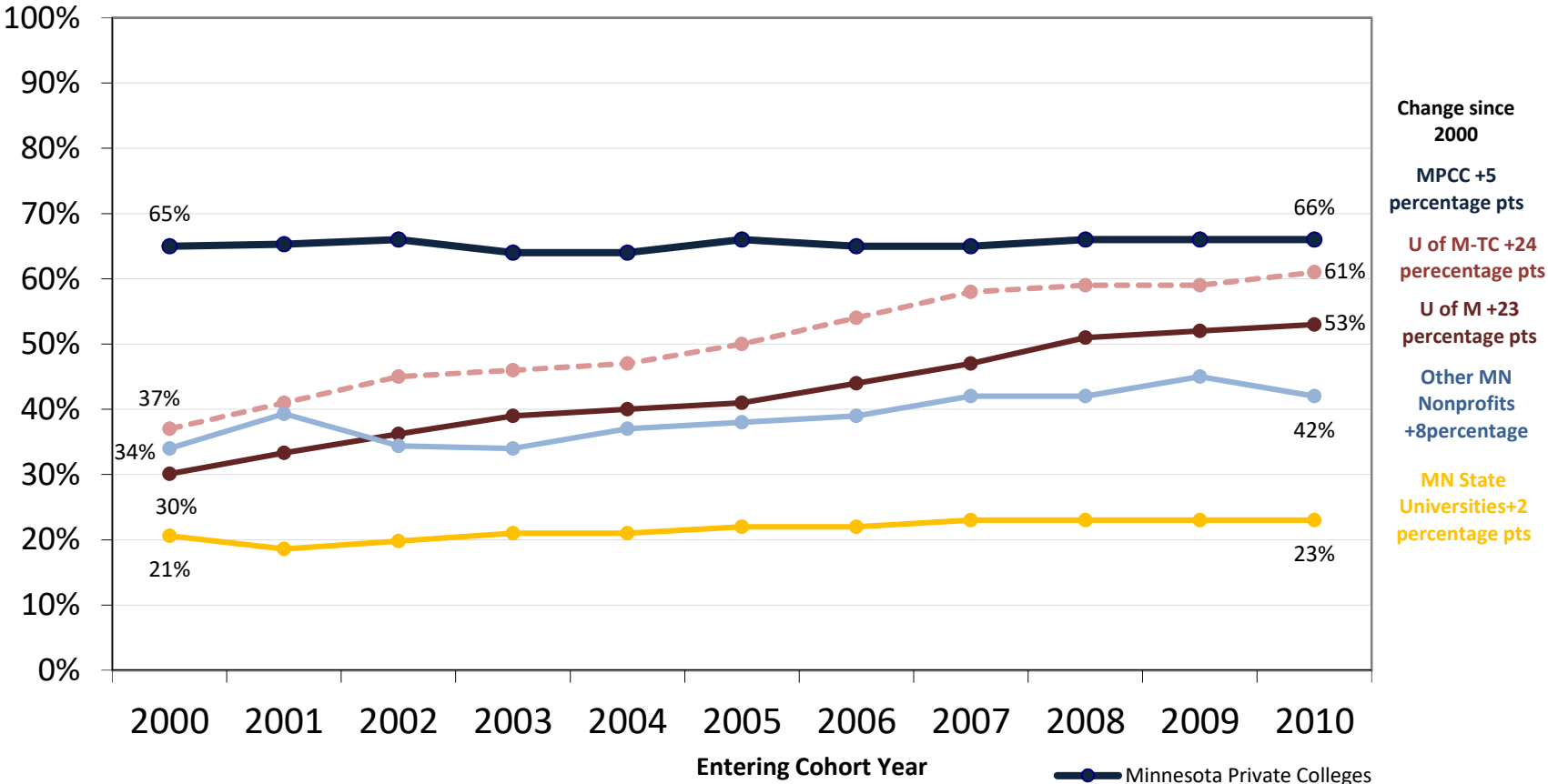
Starting with the fall 2010 first-time, full-time cohort...

	Graduated within four years		Graduated within 6 years		Completion Rate: Share of those graduating who completed in 4 years
MPCC	5,947	/	6,718	=	89%
U of M	4,432	/	5,992	=	74%
MN State*	2,033	/	4,073	=	50%

Source: IPEDS graduation rate data.

*Fall 2009 cohort data was used for Minnesota State Universities because fall 2010 cohort data was not available.

Minnesota Graduation Rate Trends: Percent of Cohort Graduating in Four Years by Sector

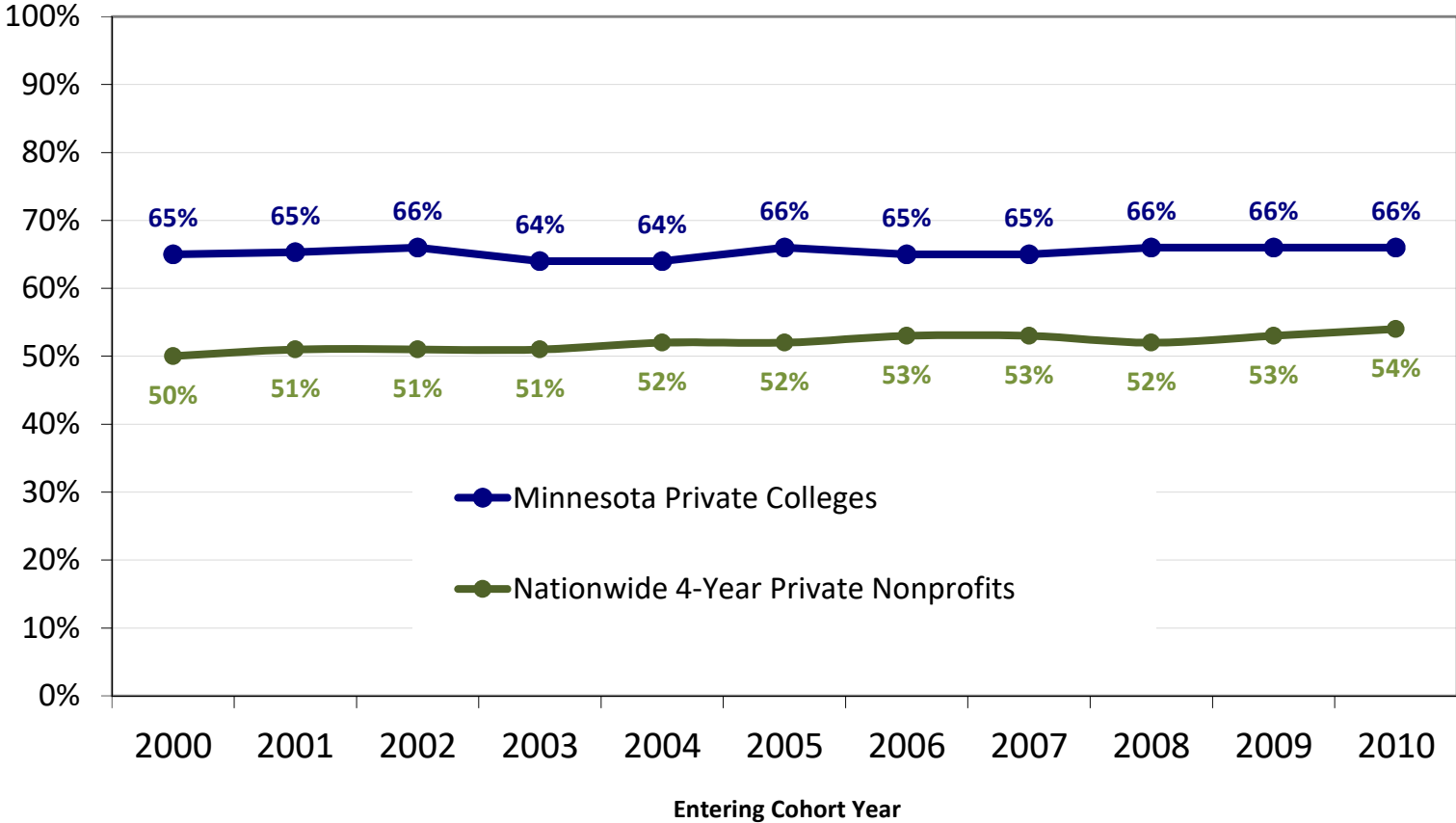


Source: U.S. Department of Education, IPEDS 2000 through 2010 Cohort.

*IPEDS Fall 2009 cohort data used for fall 2010 for Minnesota State because fall 2010 data was unavailable.

- Minnesota Private Colleges
- University of Minnesota
- University of Minnesota - Twin Cities Campus Only
- Minnesota State Universities*
- Other MN Private Nonprofits

Percent Graduating in Four Years: Minnesota Private Colleges Compared to All Other Private Nonprofit Colleges in U.S.



Source: U.S. Department of Education, IPEDS 2000 through 2010 Cohort.